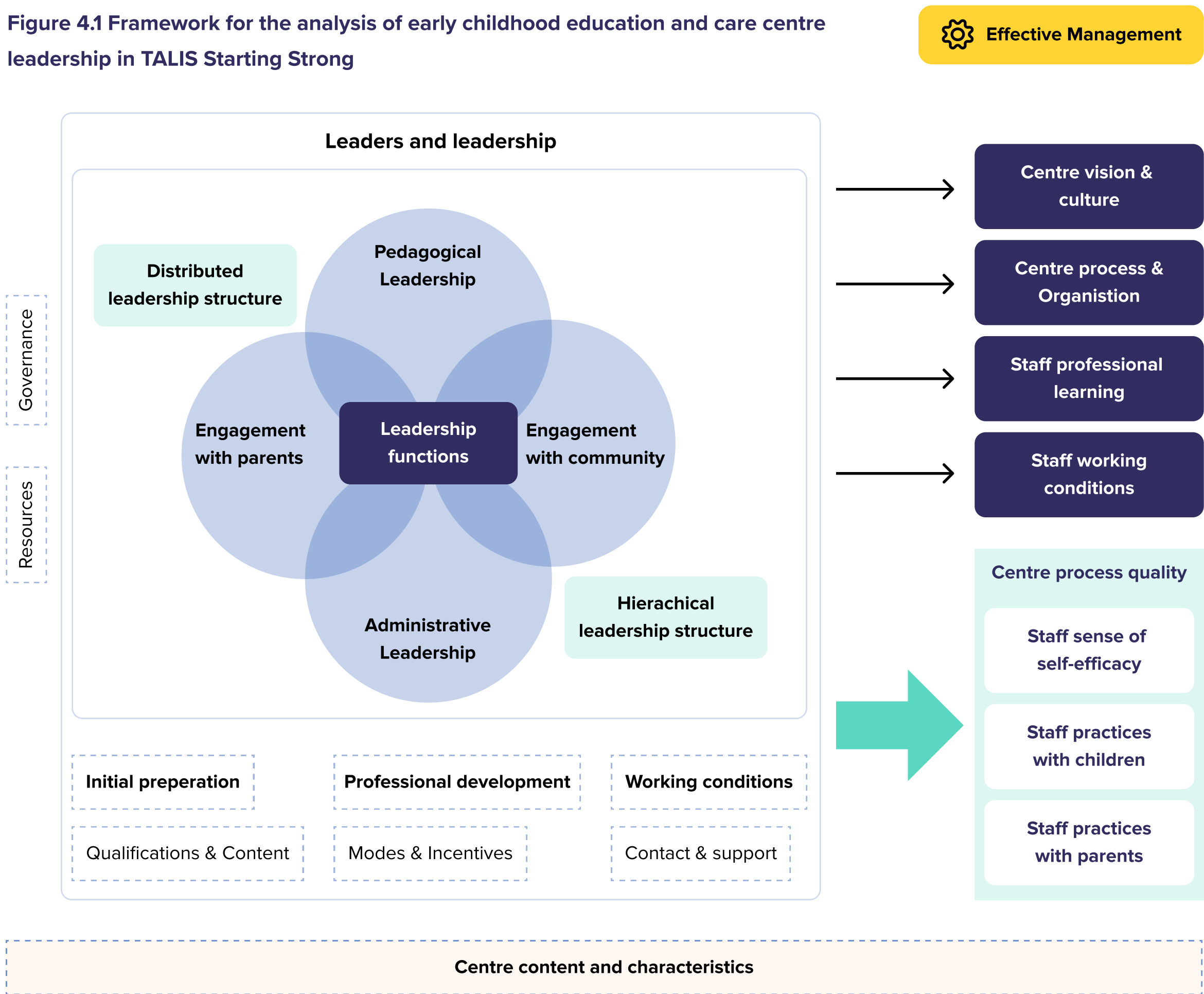


Theme 3: Quality of leadership determines quality of early learning and care

Figure 4.1 Framework for the analysis of early childhood education and care centre leadership in TALIS Starting Strong



The TALIS Starting Strong Report (2018) examines the main factors that can help build a high-quality ECEC workforce. TALIS Starting Strong asked ECEC staff and leaders in nine participating countries (Chile, Denmark, Germany, Iceland, Israel, Japan, Korea, Norway and Turkey) about their characteristics, practices at work and views on the ECEC sector.